

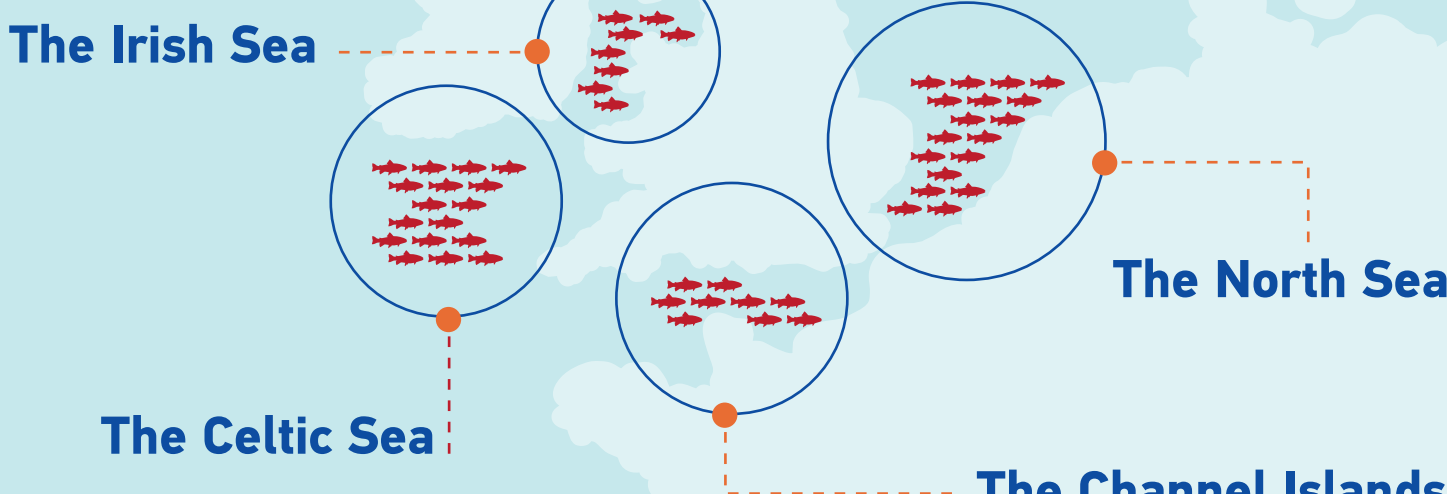


Protecting sea bass

The European Commission has announced a package of measures to protect sea bass

Emergency ban on pelagic trawling of sea bass during spawning season

(until the end of April) in:



Complementary measures will be proposed to manage recreational fishing and limit catches by all other commercial fisheries

in coordination with:



The United Kingdom

France

Belgium

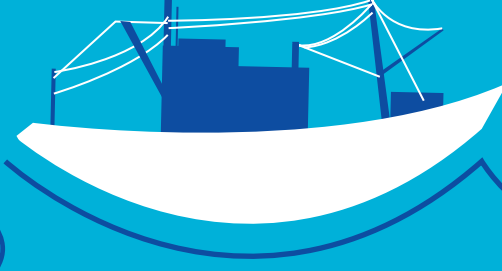
The Netherlands

Ireland

The European Commission will put forward a proposal to the Council

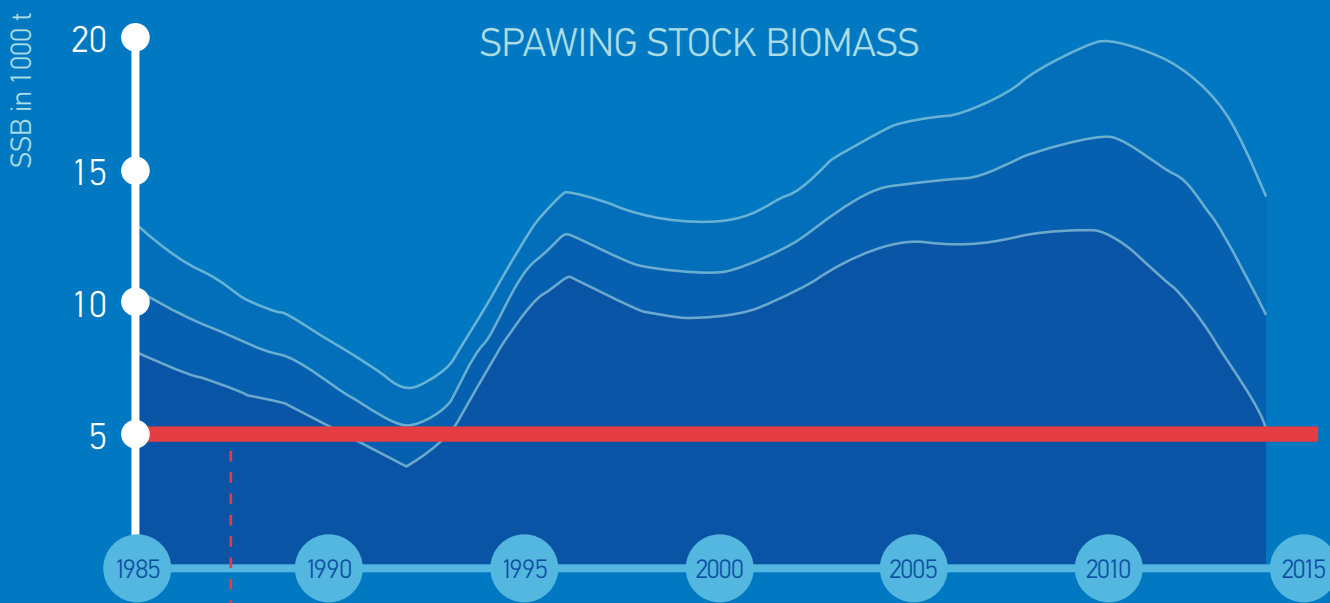
Why pelagic trawling?

Pelagic trawlers endanger sea bass during the spawning season (when they are most vulnerable)



If the fishing of sea bass during the spawning season continues, the stock's future will be jeopardised

Sea bass a stock in decline



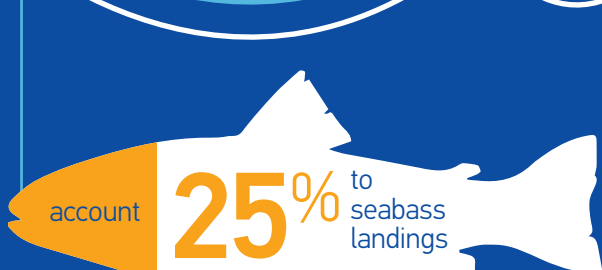
Below this limit, reproductive capacity risks being severely inhibited

We are witnessing a rapid decline in sea bass stocks that could lead to a collapse

Source: ICES 2014, advice for seabass in southern North Sea, Channel, Celtic Sea, Irish Sea

Sea bass & recreational fishing

Sea bass is a popular target for recreational fishers, especially anglers



Recreational angling supported **10 400** full-time equivalent jobs in 2012